

Building sipXecs in Netbeans

Install Netbeans

If you are in Fedora 13 or higher you can install netbeans through yum

```
sudo yum install netbeans
```

If netbeans is not packaged in your current operating system you may download the netbeans binary installer from their site

<http://netbeans.org/downloads/index.html>

Make sure you download the package that includes all language plugins. sipXecs is written mostly in Java and C++. If you will be working with scrips in sipXecs you will find Netbeans Ruby handy as well. After downloading, simply execute the script installer.

```
chmod +x ./netbeans-6.9.1-ml-linux.sh
sudo ./netbeans-6.9.1-ml-linux.sh
netbeans
```

Preparing sipXecs for Netbeans

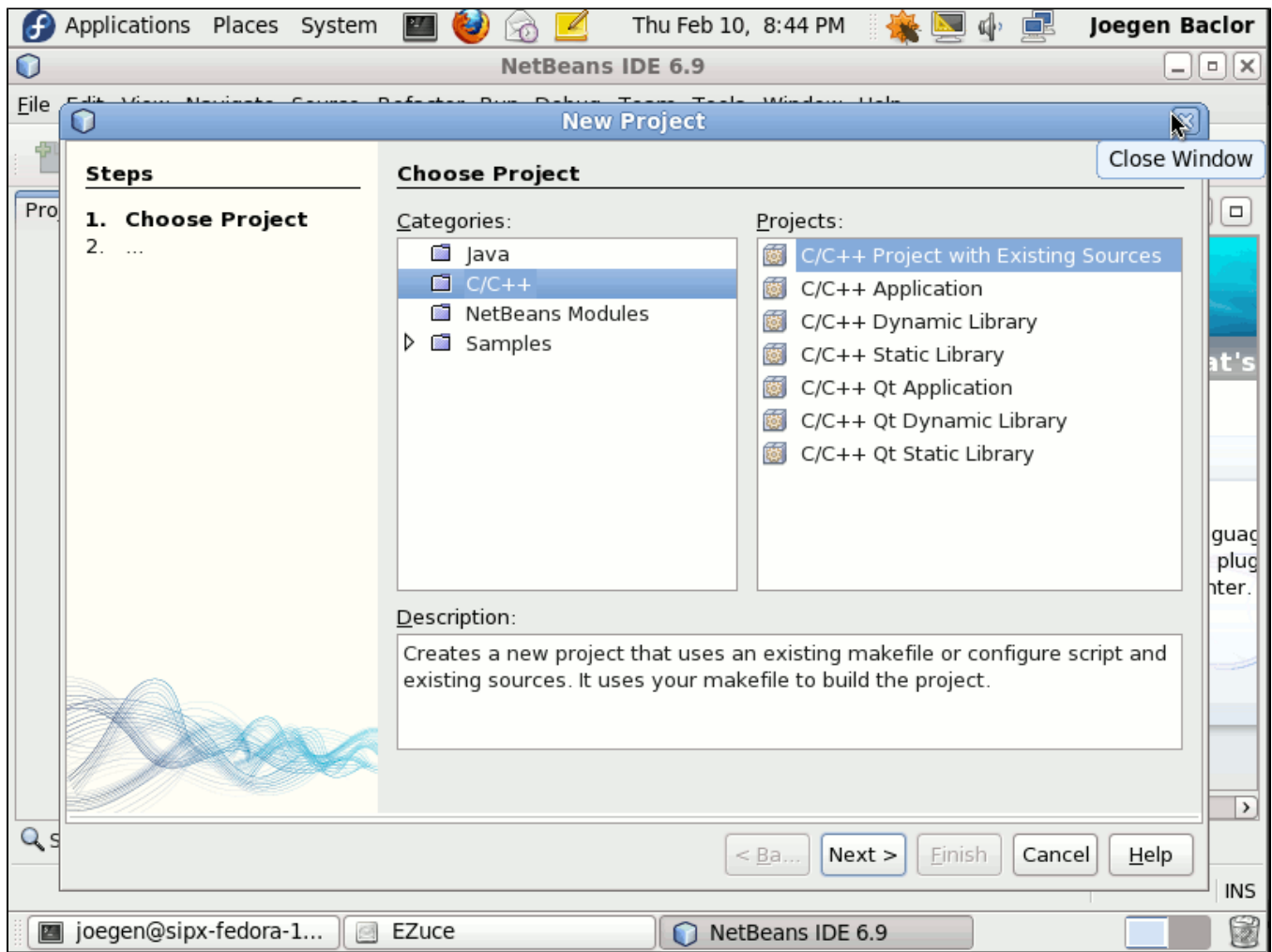
Make sure you have downloaded the latest sipXecs code from github and its dependencies. If not follow the instructions from these links:

[Working with GIT repository](#)
[Building RPMS on CentOS or Fedora](#)

Creating the sipXecs Netbeans Workspace

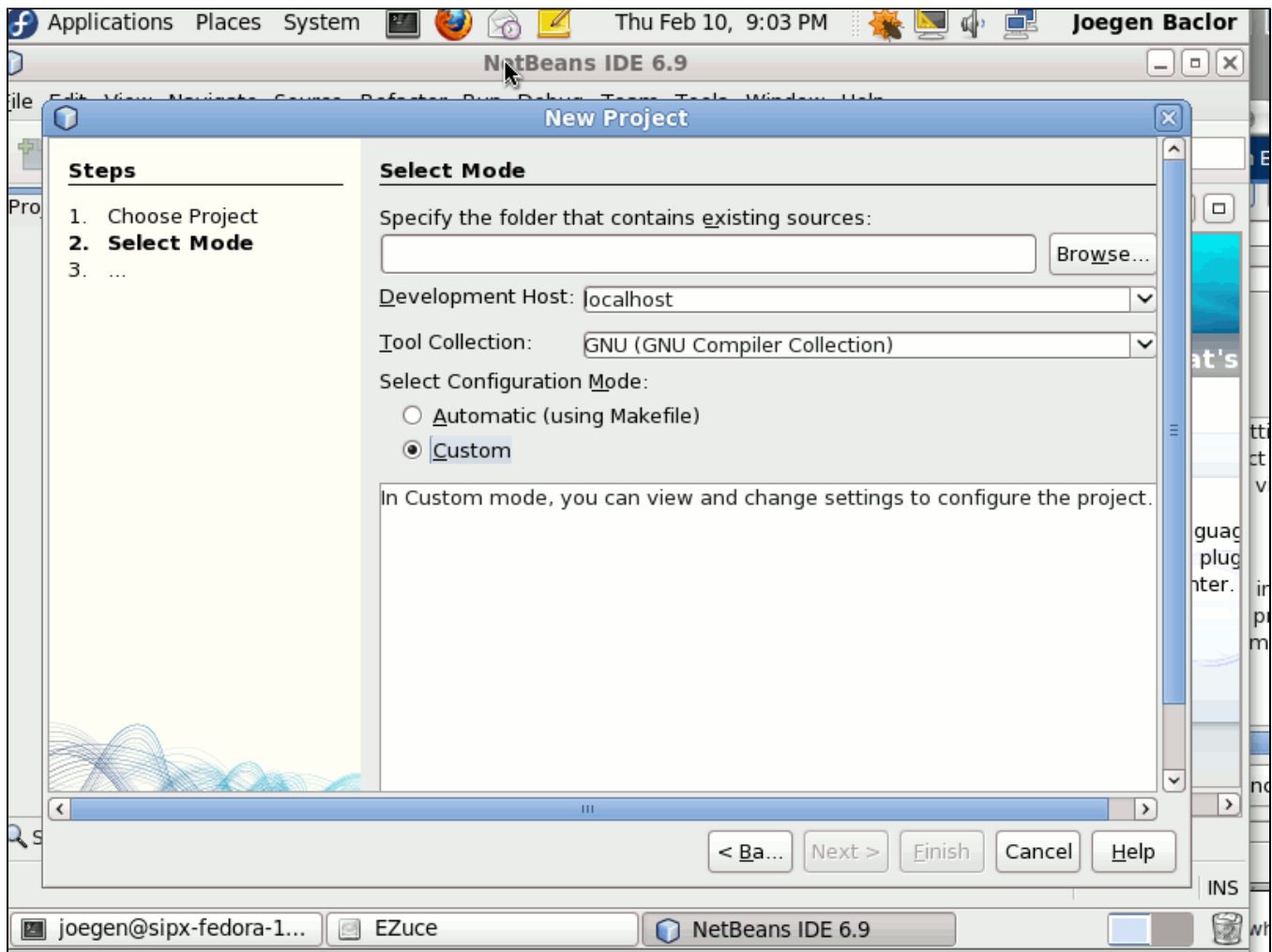
Launch netbeans. If you are on Fedora, it should be in your applications menu under Programming/Netbeans. You may also simply type `netbeans` in the command line.

On the main menu, click on File/New Project. The new Project Wizard should appear.

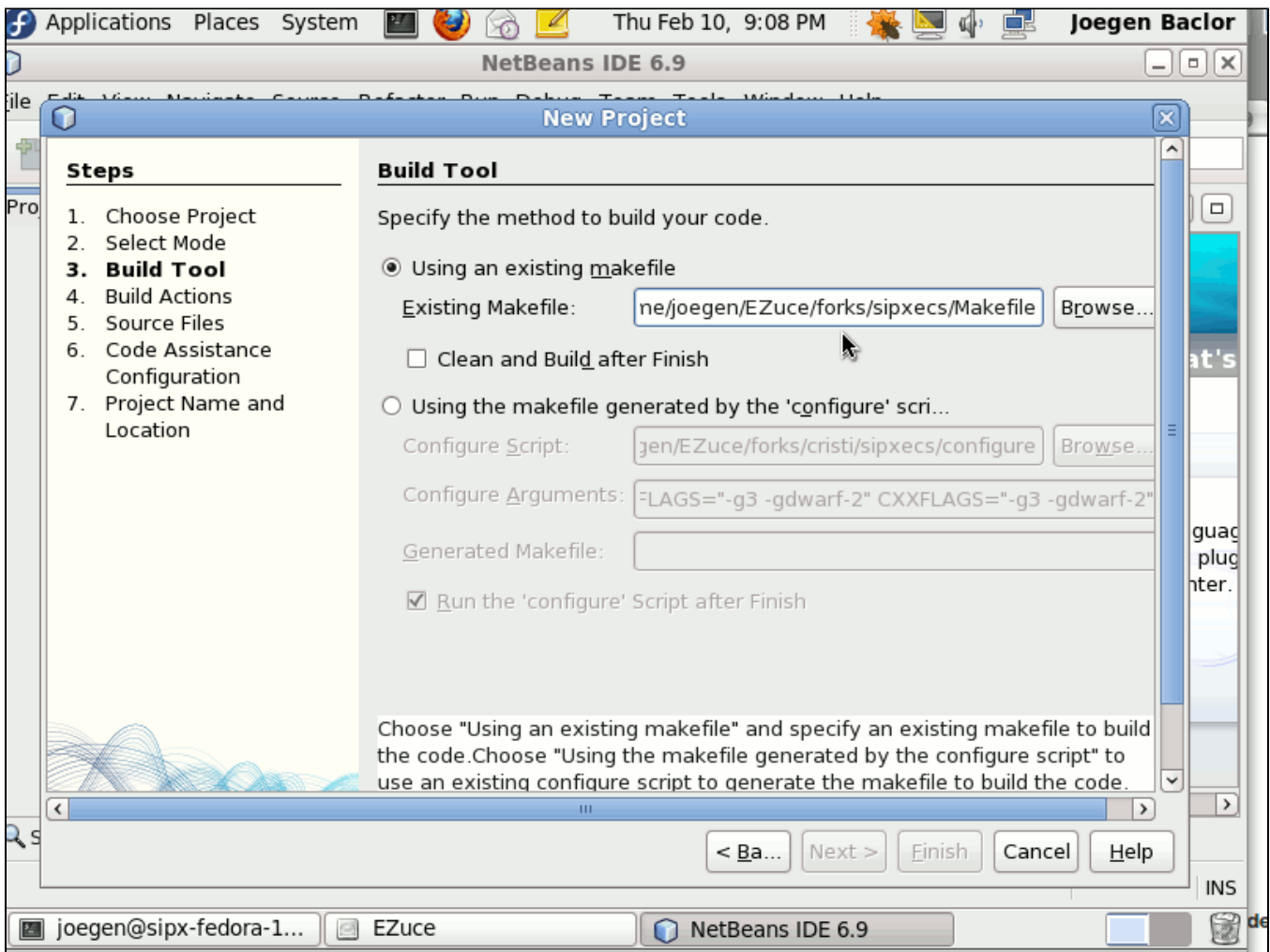


Choose C/C++ in the Categories pane and C++ Project with Existing Sources in the projects pane. Do not worry about the Java. Netbeans would be able to cope with the mix sources even if we currently choose C++.

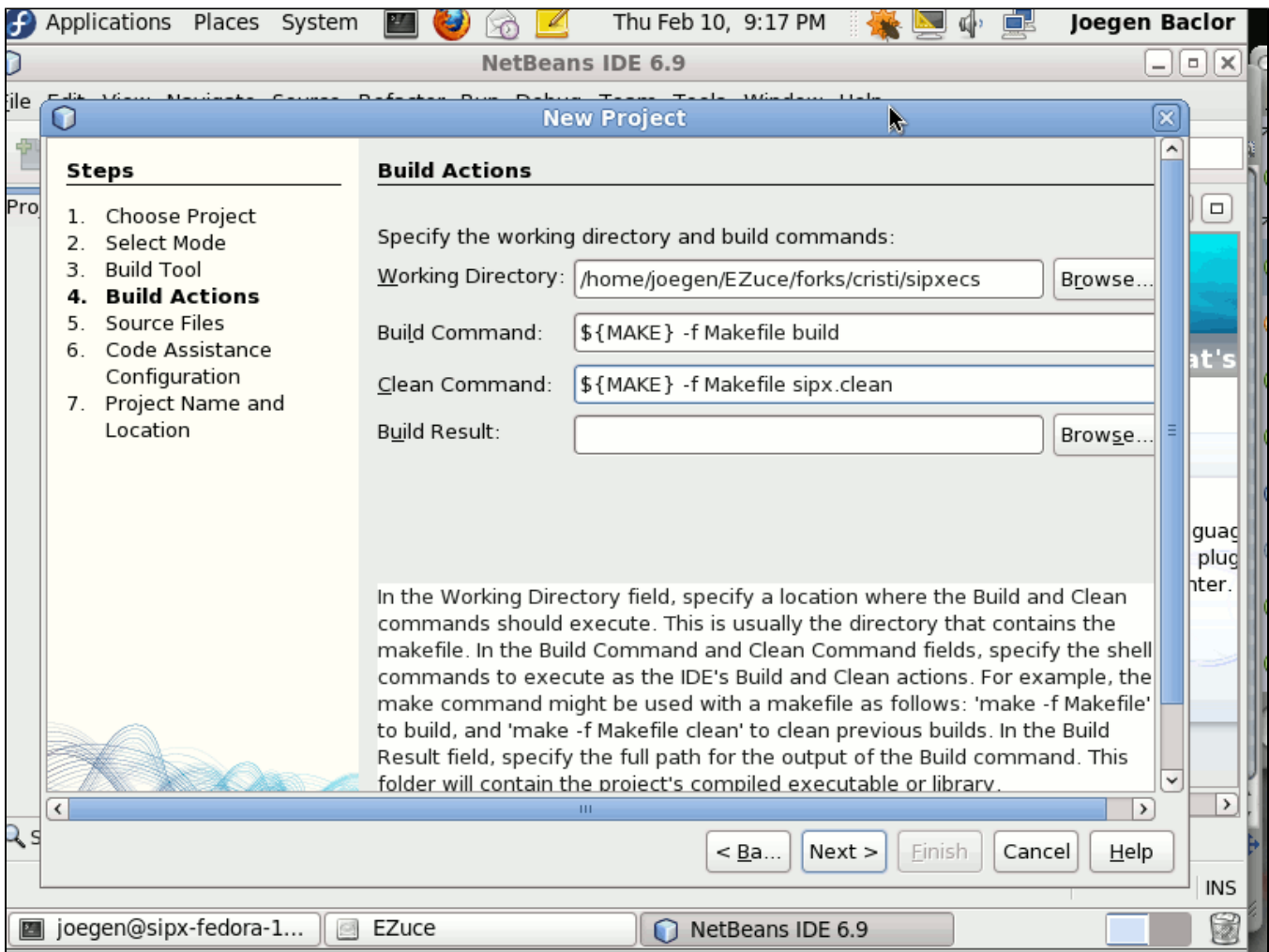
Click the **Next** button.



The next dialog will ask you to specify where sipXecs sources reside. Click the **Browse** button and navigate to where you downloaded your sources. In the **Configuration Mode** choose **Custom**. Click the **Next** button.

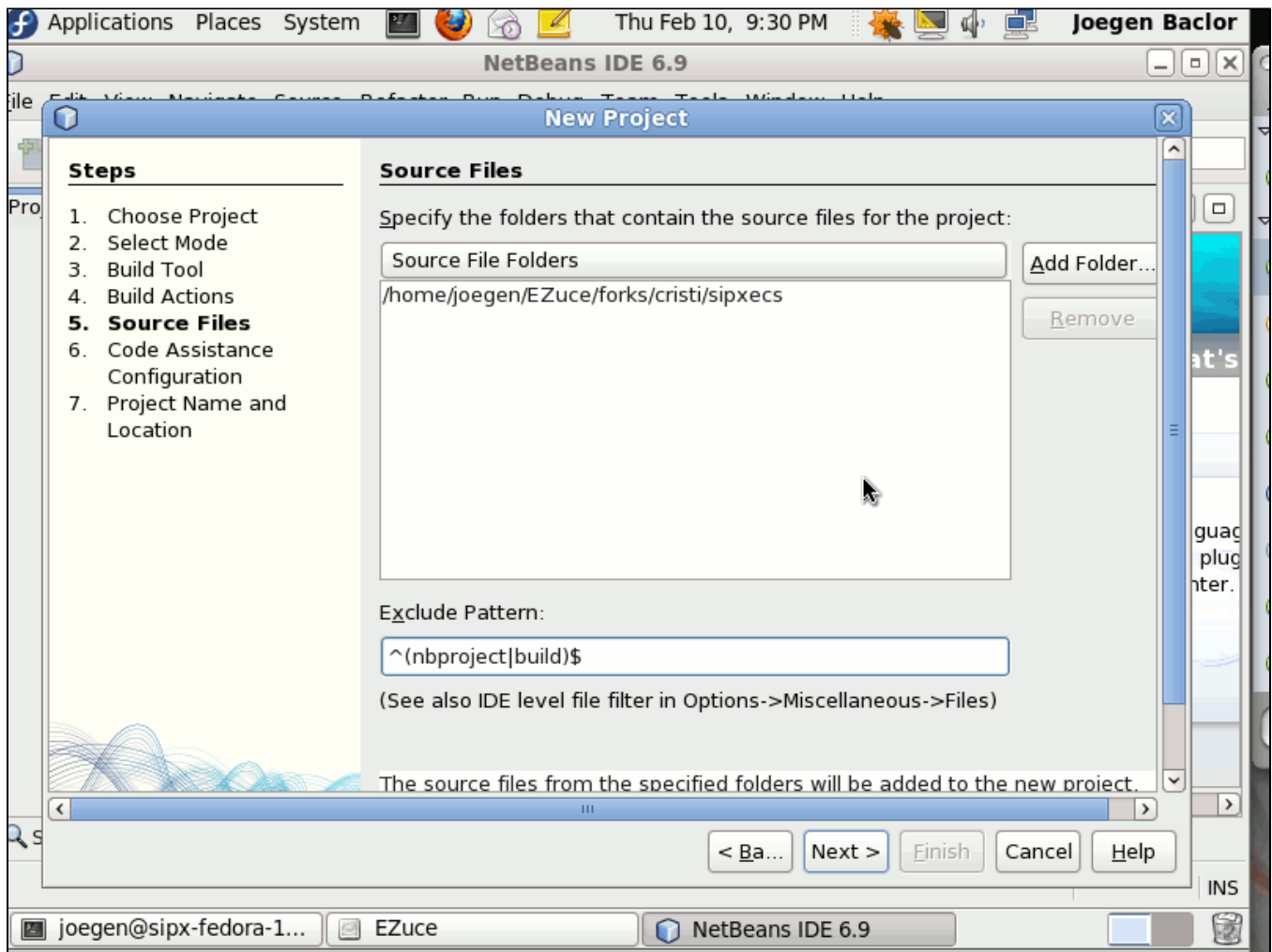


In this dialog, you will be asked to specify the Makefile to be used to compile sipXecs. The wizard should have found the correct path for you by default. If now, click the **Browse** button and locate the Make file in the base directory of you sipXecs source folder. Uncheck **Clean and Build after finish** and click **Next**.

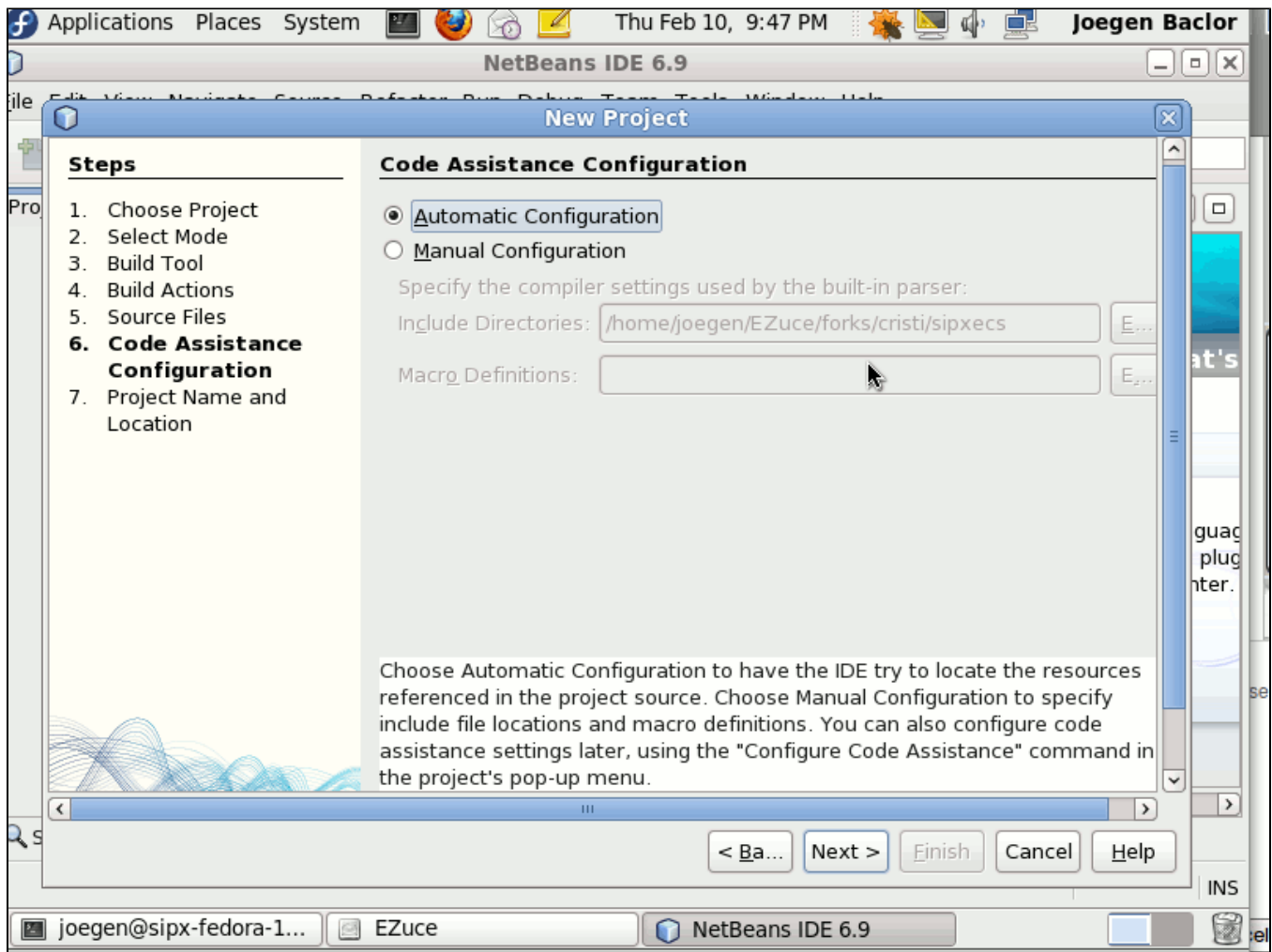


Change the **Build Command** and **Clean Command** to

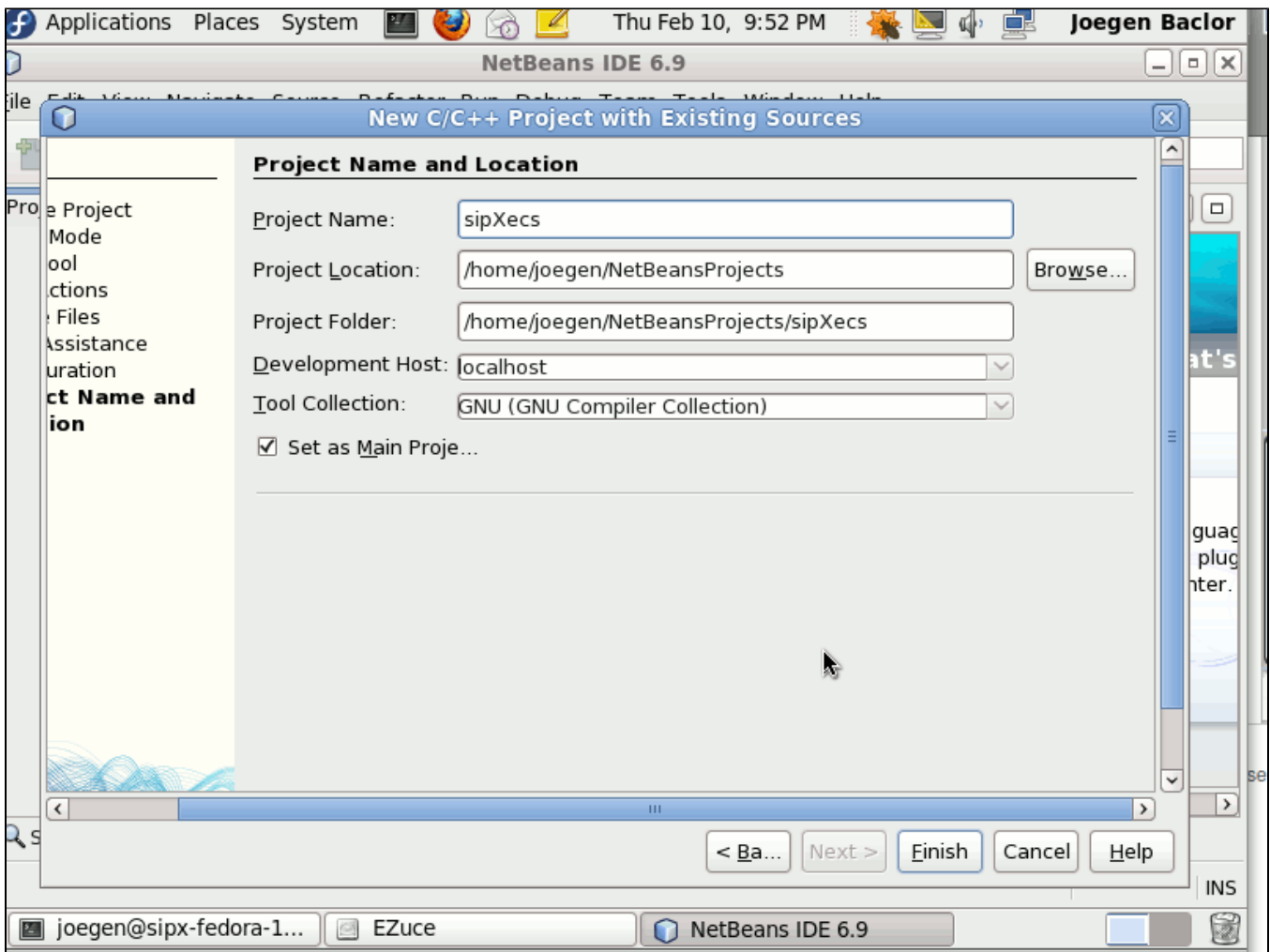
```
${MAKE} -f Makefile build  
${MAKE} -f Makefile sipx.clean
```



The next screen allows you to help Netbeans locate the sources folder. Just choose the base folder of sipXecs which Netbeans has already done for you and click the next button.



The next screen allows you to configure code assistance. Choose **Automatic** to let Netbeans where your classes reside. Click **Next**.



Lastly, you need to specify where you want to store the Netbeans project files. When you are done, simply right click sipXecs from the project explorer of netbeans and click build. Happy hacking!